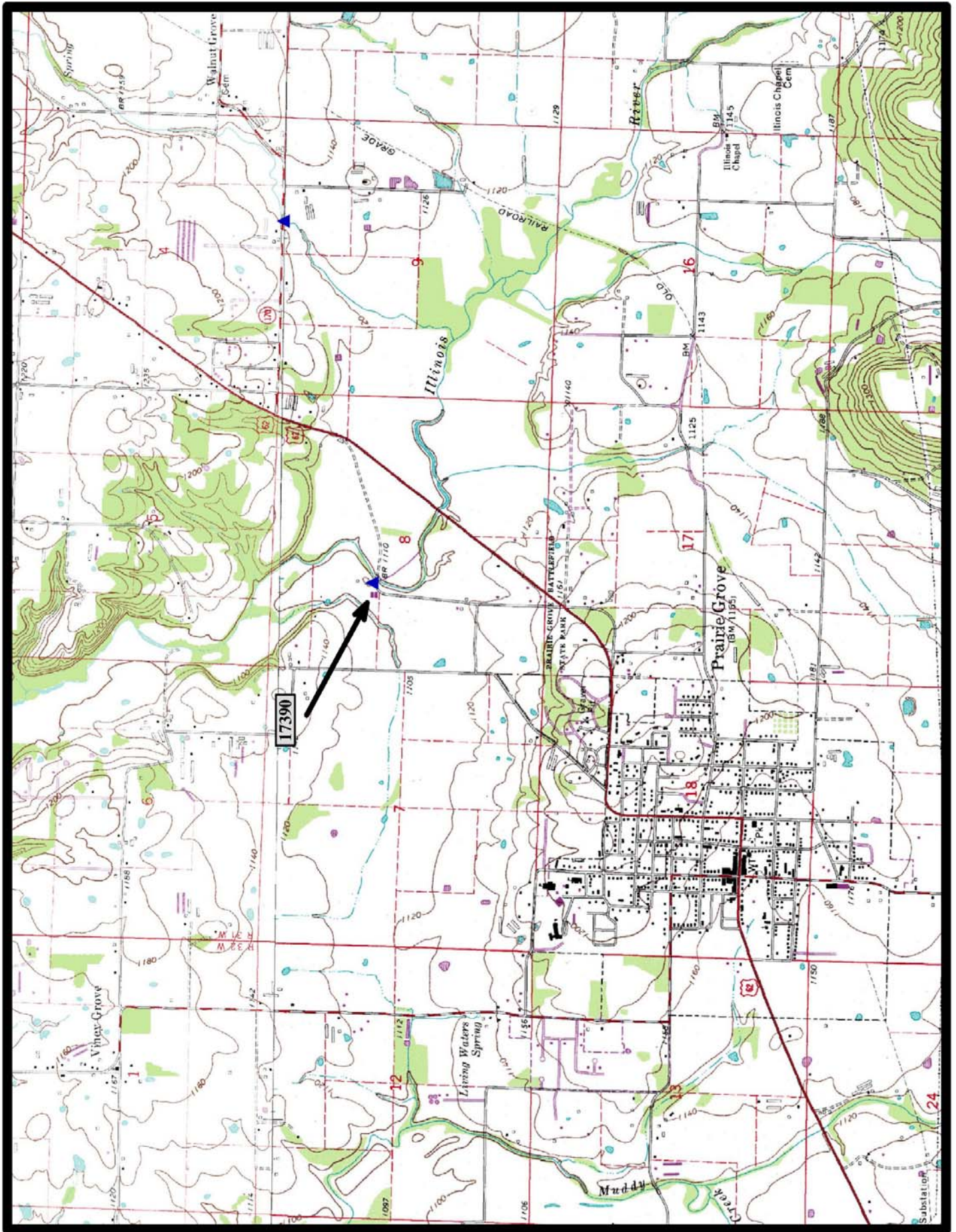




HISTORIC BRIDGE #17390
COUNTY ROAD 623
WASHINGTON COUNTY
CONCRETE ARCH, DECK - CLOSED SPANDREL
CROSSES - ILLINOIS RIVER
DATE OF CONSTRUCTION – 1923
BUILDER - LUTEN BRIDGE COMPANY, KNOXVILLE, TN
HISTORIC BRIDGE INVENTORY DATE - 2005
SHPO NUMBER – WA0966
HAER NUMBER -
DATE LISTED ON NATIONAL REGISTER -
LAT./LONG. 35:59:42.39, -94:17:53.71

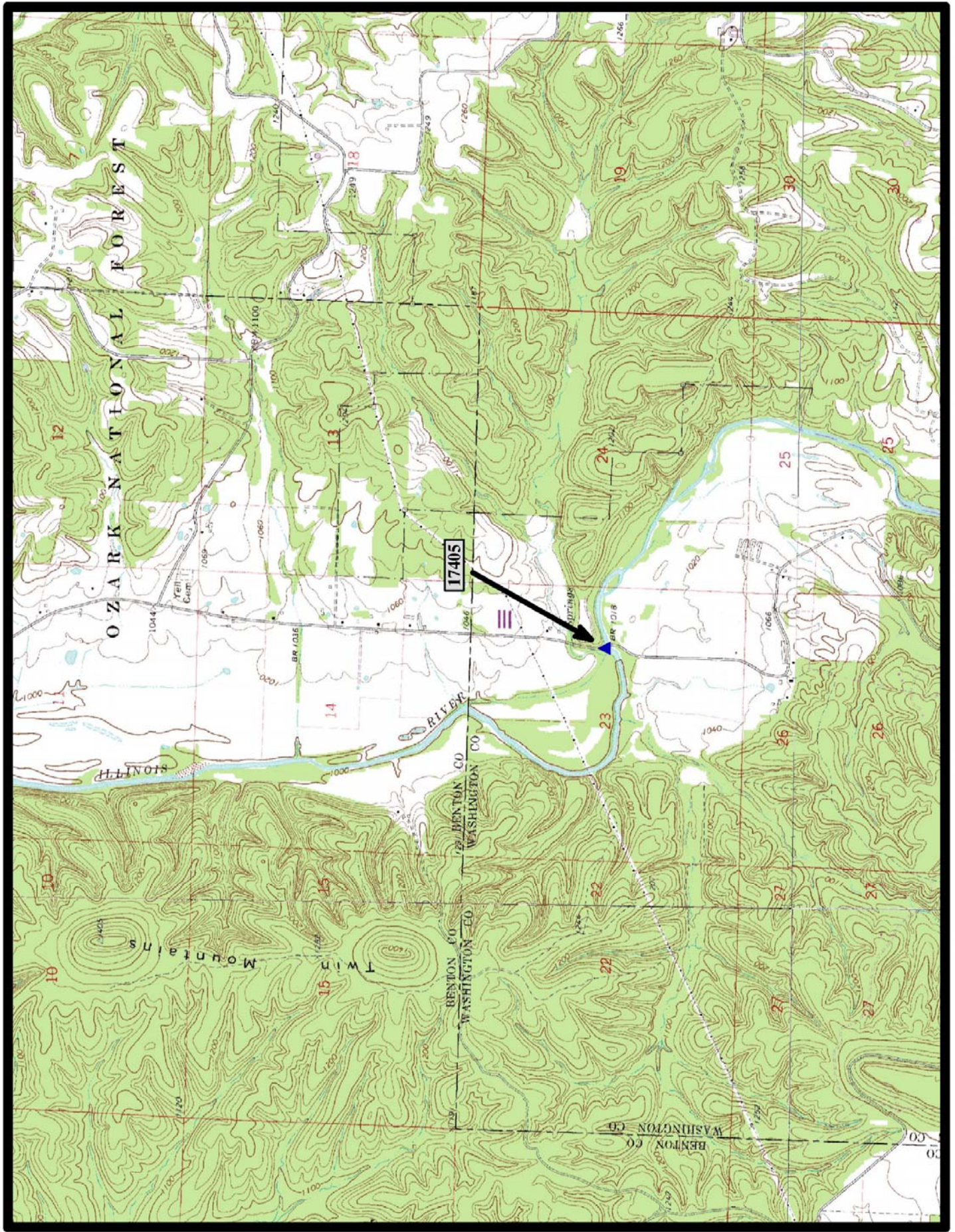


Prairie Grove. Wheeler 7.5 min. Quads

←
North



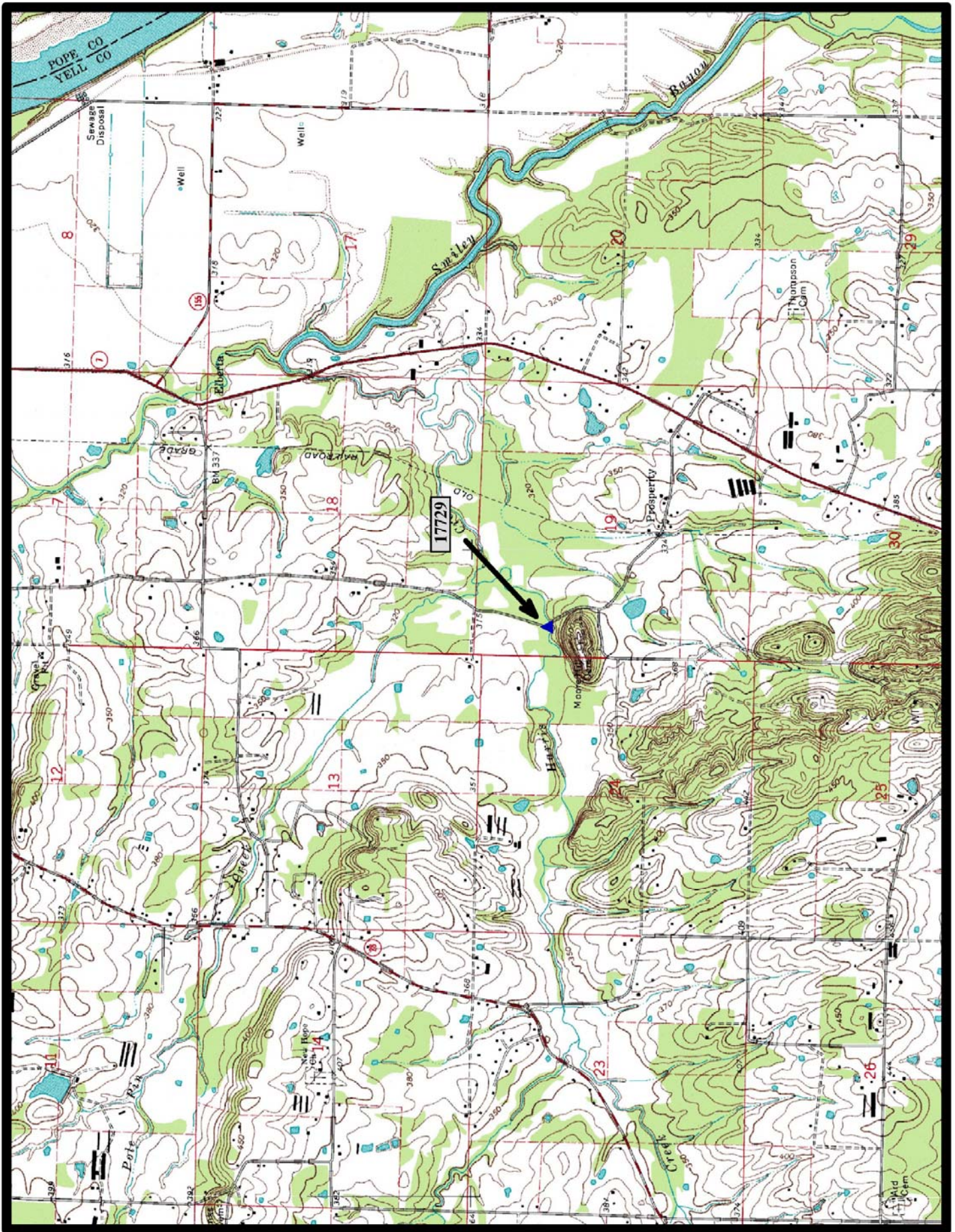
HISTORIC BRIDGE #17405
COUNTY ROAD 848
WASHINGTON COUNTY
CONCRETE ARCH, DECK - CLOSED SPANDREL
CROSSES - ILLINOIS RIVER
DATE OF CONSTRUCTION - 1926
BUILDER - LUTEN BRIDGE COMPANY, KNOXVILLE, TN
HISTORIC BRIDGE INVENTORY DATE - 2005
SHPO NUMBER - WA0961
HAER NUMBER -
DATE LISTED ON NATIONAL REGISTER -
LAT./LONG. 36:08:06.25, -94:21:29.21



North



HISTORIC BRIDGE #17729
COUNTY ROAD 52
YELL COUNTY
CONCRETE ARCH, DECK - CLOSED SPANDREL
CROSSES - HARRIS CREEK
DATE OF CONSTRUCTION - 1912
BUILDER - J. C. WILSON
HISTORIC BRIDGE INVENTORY DATE - 2005
SHPO NUMBER - YE0120
HAER NUMBER - AR-94
DATE LISTED ON NATIONAL REGISTER -
LAT./LONG. 35:09:45.70, -93:10:17.91

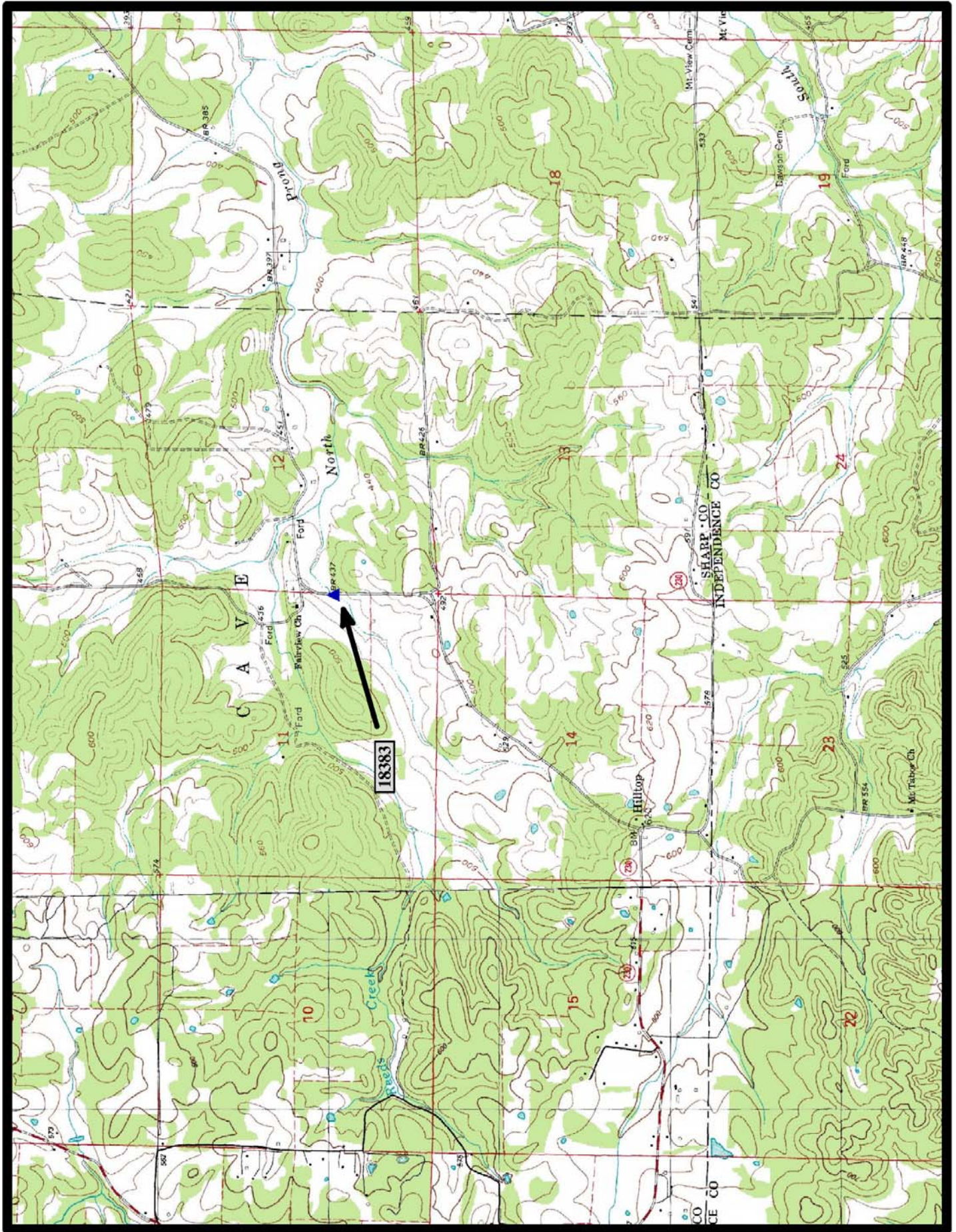


↑
North

Dardanelle 7.5 min. Quads



HISTORIC BRIDGE #18383
GRANGER ROAD
SHARP COUNTY
CONCRETE ARCH, DECK - CLOSED SPANDREL
CROSSES - UNNAMED BRANCH
DATE OF CONSTRUCTION – 1940
BUILDER - UNKNOWN
HISTORIC BRIDGE INVENTORY DATE - 2005
SHPO NUMBER – SH0157
HAER NUMBER -
DATE LISTED ON NATIONAL REGISTER -
LAT./LONG. 35:57:22.75, -91:28:50.36

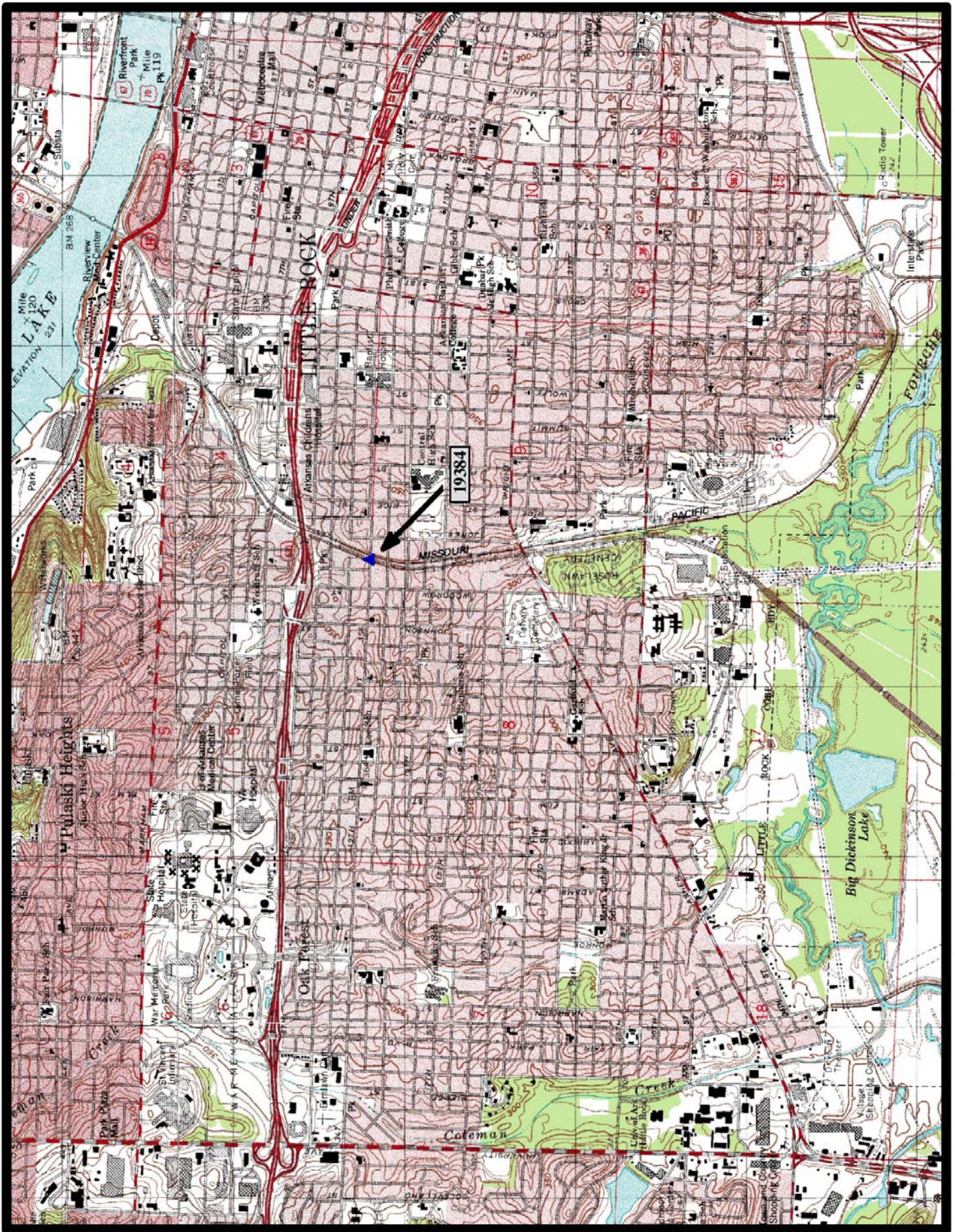


North

Grange 7.5 min. Quad



HISTORIC BRIDGE #19384
WEST 12TH STREET
PULASKI COUNTY
CONCRETE ARCH, DECK - CLOSED SPANDREL
CROSSES - UNION PACIFIC RAILROAD
DATE OF CONSTRUCTION – 1936
BUILDER - FRED LUTTJOHANN, TOPEKA, KS
HISTORIC BRIDGE INVENTORY DATE - 2005
SHPO NUMBER – PU0140
HAER NUMBER -
DATE LISTED ON NATIONAL REGISTER -
LAT./LONG. 34:44:23.23, -92:18:13.17



North

Little Rock 7.5 min. Quad